

SW, GSW, HGSW wide angle full cone spray nozzles

SPRAY CHARACTERISTICS: A wide angle full cone spray pattern, with uniform distribution throughout the cone.

CONSTRUCTION: This nozzle contains a patented insert with larger flow passages than older styles, and is less susceptible to clogging. Standard materials are brass, 303 stainless steel and 316 stainless steel. Some models are also stocked in PVC, CPVC and polypropylene.

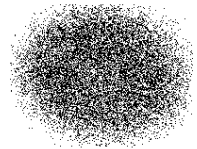
See page 22 for PSW plastic wide angle full cone nozzles in larger capacities.

TYPICAL APPLICATIONS: Anywhere a wide angle full cone spray is required:

- Chemical Processing
- Cooling Sprays
- Continuous casting

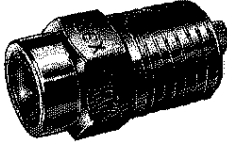
U.S. Patent No. 4,142,682
Canadian Patent No. 1,050,589

Pattern - Full Conical



SW series

Wide angle full cone: One piece body + removable insert



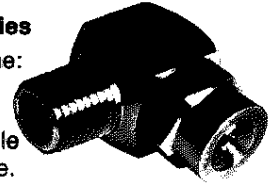
GSW series

Wide angle full cone: Two piece body + removable insert



HGSW series

Wide angle full cone: Two piece body + removable insert. Sprays at right angle to centerline of pipe.

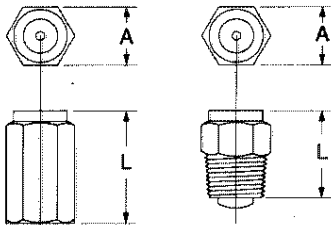


DIMENSIONS (inches)					
male SW	DIM. A	DIM. L	female FSW	DIM. A	DIM. L
1/8SW	7/16 HEX	13/16	3/4FSW	1 1/4 HEX	2 3/8
1/4SW	9/16 HEX	15/16	1FSW	1 1/2 HEX	2 1/2
3/8SW	1 1/16 HEX	1 1/16	1 1/4FSW	2 HEX	3 1/2
1/2SW	7/8 HEX	1 7/16	1 1/2FSW	2 1/4 Diam.	4 1/4
3/4SW	1 1/4 HEX	1 11/16	2FSW	2 3/4 Diam.	5 7/8
1SW	1 3/8 HEX	2 1/16	2 1/2FSW	3 1/2 Diam.	6 1/2
			3FSW	4 Diam.	7 3/4
			4FSW	5 Diam.	10 1/2

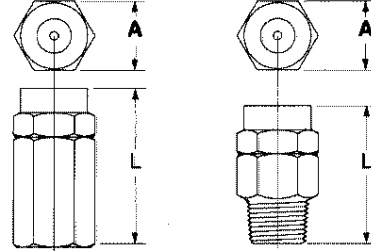
DIMENSIONS (inches)		
NOZZLE SIZE	Dim. A	Dim. L
1/8GSW	5/8 HEX	1 5/16
1/4GSW	1 1/16 HEX	1 9/16
3/8GSW	1 3/16 HEX	1 11/16
1/2GSW	1 HEX	2
1/8FGSW	5/8 HEX	1 9/32
1/4FGSW	1 1/16 HEX	1 21/32
3/8FGSW	1 3/16 HEX	1 15/16
1/2FGSW	1 HEX	2 3/32

DIMENSIONS (inches)					
NOZZLE SIZE	Dim. A	Dim. B	Dim. C	Dim. D	Dim. L
1/8HGSW	23/32	1 1/16	5/8 SQ	1 1/32	1
1/4HGSW	29/32	1	3/4 SQ	1 9/32	1 3/8
3/8HGSW	1 1/32	7/16	7/8 SQ	1 15/32	1 17/32
1/2HGSW	1 3/16	1 3/8	1 SQ	1 11/16	1 7/8
1/8FHGSW	21/32	1 1/16	1/2 SQ	29/32	31/32
1/4FHGSW	29/32	1	3/4 SQ	1 9/32	1 3/8
3/8FHGSW	1 1/32	1 3/32	7/8 SQ	1 15/32	1 17/32
1/2FHGSW	1 3/16	1 3/8	1 SQ	1 11/16	1 7/8

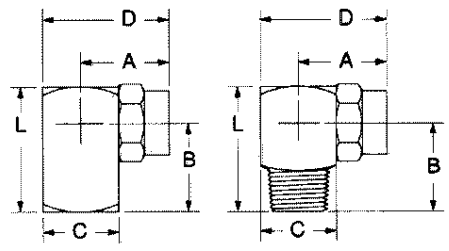
FSW: Female Connection SW: Male Connection



FGSW: Female Connection GSW: Male Connection



FHGSW: Female Connection HGSW: Male Connection



'SW' one piece body		'GSW' two piece body		'HGSW' two piece body, right angle		PIPE SIZE N.P.T.	MAXIMUM FREE PASSAGE (inches)	CAPACITY (G.P.M.)* AT VARIOUS PRESSURES (p.s.i.)												SPRAY ANGLE @		
FEMALE	MALE	FEMALE	MALE	FEMALE	MALE			5 p.s.i.	7 p.s.i.	10 p.s.i.	15 p.s.i.	20 p.s.i.	30 p.s.i.	40 p.s.i.	60 p.s.i.	80 p.s.i.	100 p.s.i.	150 p.s.i.	10 p.s.i.	40 p.s.i.	80 p.s.i.	
1/8S2.8W	1/8S4.3W	1/8FGS2.8W	1/8FGS4.3W	1/8GS2.8W	1/8GS4.3W	1/8	.051	-.23	.28	.34	.40	.48	.56	.69	.79	.89	1.08	110°	105°	96°		
1/8S5.6W	1/8S8W	1/8FGS5.6W	1/8FGS8W	1/8GS5.6W	1/8GS8W		.064	-.47	.56	.69	.79	.97	1.12	1.37	1.58	1.77	2.17	117°	110°	100°		
1/4S5.6W	1/4S10W	1/4FGS5.6W	1/4FGS10W	1/4GS5.6W	1/4GS10W	1/4	.064	.40	.47	.56	.69	.79	.97	1.12	1.37	1.58	1.77	2.2	120°	108°	102°	
1/4S12W	1/4S14W	1/4FGS12W	1/4FGS14W	1/4GS12W	1/4GS14W		.091	.71	.84	1.00	1.22	1.41	1.73	2.0	2.4	2.8	3.2	3.9	118°	108°	102°	
1/4S17W	3/8S17W	1/4FGS17W	3/8FGS17W	1/4GS17W	3/8GS17W	3/8	.102	1.20	1.42	1.70	2.1	2.4	2.9	3.4	4.2	4.8	5.4	6.6	118°	117°	102°	
3/8S20W	3/8S24W	3/8FGS20W	3/8FGS24W	3/8GS20W	3/8GS24W		.102	1.41	1.67	2.0	2.4	2.8	3.5	4.0	4.9	5.7	6.3	7.7	120°	120°	106°	
3/8S27W	1/2S30W	3/8FGS27W	1/2FGS30W	3/8GS27W	1/2GS30W	1/2	.102	1.70	2.0	2.4	2.9	3.4	4.2	4.8	5.9	6.8	7.6	9.3	122°	118°	106°	
1/2S35W	1/2S40W	1/2FGS35W	1/2FGS40W	1/2GS35W	1/2GS40W		.102	1.91	2.3	2.7	3.3	3.8	4.7	5.4	6.6	7.6	8.5	10.5	122°	120°	107°	
1/2S45W	3/4S50W	1/2FGS45W	3/4FGS50W	1/2GS45W	3/4GS50W	3/4	.144	2.1	2.5	3.0	3.7	4.2	5.2	6.0	7.3	8.5	9.5	11.6	120°	118°	110°	
3/4S71W	1FS13W	3/4FGS71W	1FS13W	3/4GS71W	1FS13W		.144	2.5	2.9	3.5	4.3	4.9	6.1	7.0	8.6	9.9	11.1	13.6	122°	118°	108°	
							.162	2.8	3.3	4.0	4.9	5.7	6.9	8.0	9.8	11.3	12.6	15.5	122°	119°	104°	
							.162	3.2	3.8	4.5	5.5	6.4	7.8	9.0	11.0	12.7	14.2	17.4	121°	118°	108°	
							.195	3.5	4.2	5.0	6.1	7.1	8.7	10.0	12.2	14.1	15.8	19.4	120°	120°	110°	
							.195	5.0	5.9	7.1	8.7	10.0	12.3	14.2	17.4	20	22	27	118°	120°	112°	
							.219	9.2	10.9	13.0	15.9	18.4	23	26	32	37	41	50	120°	125°	118°	
							.260	13	16	19	23	27	33	38	47	54	60	74	122°	123°	120°	
							.329	21	24	29	36	41	50	58	71	82	92	112	125°	125°	120°	
							.438	40	47	56	69	79	97	112	137	158	177	220	125°	125°	118°	
							.531	59	69	83	102	117	144	166	200	240	260	320	122°	123°	120°	
							.688	76	90	107	131	151	185	210	260	300	340	410	125°	123°	123°	
							.875	117	138	165	200	230	290	330	400	470	520	640	125°	125°	123°	

*All References to G.P.M. mean U.S. G.P.M.