

H series hollow cone spray nozzles

SPRAY CHARACTERISTICS:

A hollow cone spray pattern, emerging at right angles to the centerline of the pipe connection. The standard included angle of the spray cone is 70° at 10 p.s.i. At low pressures hollow cone nozzles produce medium size, uniform droplets. At higher pressures finer droplets are produced.

CONSTRUCTION: The models listed are machined from bar stock, and are two piece construction. Standard materials are brass, 303 stainless steel and 316 stainless steel. Some models are stocked in other materials also.

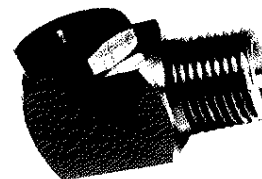
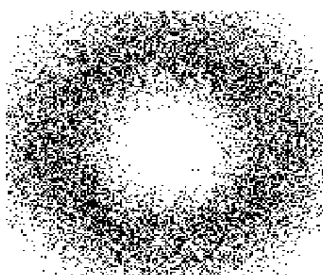
TYPICAL APPLICATIONS:

- Air and Gas Washing
- Rinsing
- Industrial Washers
- Cooling Tunnels...

applications (continued)

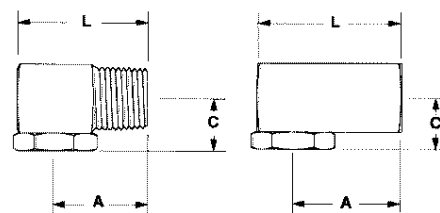
- Roof Cooling
- Degreasing
- Aerating
- Spray Ponds
- Humidifying
- Dust Suppression
- Metal Treatment
- Brine Spraying

Pattern - Hollow Conical



DIMENSIONS

Male Connection Female Connection



DIMENSIONS (inches)							
male model	Dim. A	Dim. C	Dim. L	female model	Dim. A	Dim. C	Dim. L
1/8H	11/16	3/8	1	1/8FH	11/16	3/8	1
1/4H	15/16	1/2	1 1/4	1/4FH	15/16	1/2	1 1/4
3/8H	1	9/16	1 3/8	3/8FH	1 1/8	5/8	1 1/2
1/2H	1 3/8	3/4	1 7/8	1/2FH	1 3/8	3/4	1 7/8
3/4H	1 9/16	7/8	2 1/4	3/4FH	1 5/8	7/8	2 1/4

MODEL NUMBER		PIPE SIZE N.P.T.	MAXIMUM FREE PASSAGE (inches)	CAPACITY (G.P.M.)* AT VARIOUS PRESSURES (p.s.i.)												SPRAY ANGLE @			
FEMALE	MALE			3 p.s.i.	5 p.s.i.	7 p.s.i.	10 p.s.i.	15 p.s.i.	20 p.s.i.	30 p.s.i.	40 p.s.i.	60 p.s.i.	80 p.s.i.	100 p.s.i.	125 p.s.i.	10 p.s.i.	20 p.s.i.	40 p.s.i.	80 p.s.i.
1/8FH0.5	1/8H0.5	1/8	.028	--	--	--	--	--	.09	.10	.12	.14	.18	--	--	40°	45°		
1/8FH1	1/8H1	1/8	.053	--	--	--	.10	.12	.14	.17	.20	.24	.28	.35	--	60°	74°	75°	
1/8FH2	1/8H2	1/8	.086	--	--	--	.20	.24	.28	.35	.40	.49	.57	.63	.71	--	65°	72°	76°
1/8FH3	1/8H3	1/8	.098	--	--	.25	.30	.37	.42	.52	.60	.73	.85	.95	1.06	65°	76°	80°	83°
1/8FH5	1/8H5	1/8	.128	--	.35	.42	.50	.61	.71	.87	1.00	1.22	1.41	1.58	1.77	70°	77°	80°	81°
1/8FH7.5	1/8H7.5	1/8	.153	.41	.53	.63	.75	.92	1.06	1.30	1.50	1.84	2.1	2.4	2.7	70°	86°	94°	94°
1/8FH10	1/8H10	1/8	.171	.55	.71	.84	1.00	1.22	1.41	1.73	2.00	2.4	2.8	3.2	3.5	70°	71°	73°	75°
1/4FH1	1/4H1	1/4	.060	--	--	--	.10	.12	.14	.17	.20	.24	.28	.32	.35	--	61°	74°	69°
1/4FH2	1/4H2	1/4	.085	--	--	--	.20	.24	.28	.35	.40	.49	.57	.63	.71	70°	75°	83°	85°
1/4FH3	1/4H3	1/4	.111	--	--	.25	.30	.37	.42	.52	.60	.73	.85	.95	1.06	70°	70°	72°	74°
1/4FH5	1/4H5	1/4	.136	--	.35	.42	.50	.61	.71	.87	1.00	1.22	1.41	1.58	1.77	70°	77°	80°	83°
1/4FH7.5	1/4H7.5	1/4	.166	.41	.53	.63	.75	.92	1.06	1.30	1.50	1.84	2.1	2.4	2.7	70°	70°	74°	75°
1/4FH10	1/4H10	1/4	.170	.55	.71	.84	1.00	1.22	1.41	1.73	2.0	2.4	2.8	3.2	3.5	70°	74°	76°	80°
1/4FH12.5	1/4H12.5	1/4	.177	.68	.88	1.05	1.25	1.53	1.77	2.2	2.5	3.1	3.5	4.0	4.4	70°	82°	83°	83°
1/4FH15	1/4H15	1/4	.213	.82	1.06	1.25	1.50	1.84	2.1	2.6	3.0	3.7	4.2	4.7	5.3	70°	73°	75°	75°
3/8FH5	3/8H5	3/8	.136	--	.35	.42	.50	.61	.71	.87	1.00	1.22	1.41	1.58	1.77	70°	74°	76°	76°
3/8FH7.5	3/8H7.5	3/8	.164	.41	.53	.63	.75	.92	1.06	1.30	1.50	1.84	2.1	2.4	2.7	70°	74°	78°	82°
3/8FH10	3/8H10	3/8	.194	.55	.71	.84	1.00	1.22	1.41	1.73	2.0	2.4	2.8	3.2	3.5	70°	78°	80°	81°
3/8FH12.5	3/8H12.5	3/8	.205	.68	.88	1.05	1.25	1.53	1.77	2.2	2.5	3.1	3.5	4.0	4.4	70°	80°	82°	84°
3/8FH15	3/8H15	3/8	.232	.82	1.06	1.25	1.50	1.84	2.12	2.6	3.0	3.7	4.2	4.7	5.3	70°	73°	75°	75°
3/8FH20	3/8H20	3/8	.250	1.10	1.41	1.67	2.0	2.4	2.8	3.5	4.0	4.9	5.7	6.3	7.1	70°	73°	75°	75°
3/8FH25	3/8H25	3/8	.279	1.37	1.77	2.1	2.5	3.1	3.5	4.3	5.0	6.1	7.1	7.9	8.8	70°	72°	73°	73°
3/8FH30	3/8H30	3/8	.292	1.64	2.1	2.5	3.0	3.7	4.2	5.2	6.0	7.3	8.5	9.5	10.6	70°	70°	73°	72°
1/2FH25	1/2H25	1/2	.295	1.37	1.8	2.1	2.5	3.1	3.5	4.3	5.0	6.1	7.1	7.9	8.8	70°	75°	76°	76°
1/2FH30	1/2H30	1/2	.329	1.64	2.1	2.5	3.0	3.7	4.2	5.2	6.0	7.3	8.5	9.5	10.6	70°	78°	80°	81°
1/2FH40	1/2H40	1/2	.368	2.2	2.8	3.3	4.0	4.9	5.7	6.9	8.0	9.8	11.3	12.6	14.1	70°	75°	75°	75°
1/2FH50	1/2H50	1/2	.393	2.7	3.5	4.2	5.0	6.1	7.1	8.7	10.0	12.2	14.1	15.8	17.7	70°	70°	71°	73°
1/2FH60	1/2H60	1/2	.421	3.3	4.2	5.0	6.0	7.3	8.5	10.4	12.0	14.7	17.0	19.0	21.2	70°	70°	71°	71°
3/4FH40	3/4H40	3/4	.368	2.2	2.8	3.3	4.0	4.9	5.7	6.9	8.0	9.8	11.3	12.6	14.1	70°	71°	76°	79°
3/4FH50	3/4H50	3/4	.421	2.7	3.5	4.2	5.0	6.1	7.1	8.7	10.0	12.2	14.1	15.8	17.7	70°	73°	74°	74°
3/4FH60	3/4H60	3/4	.438	3.3	4.2	5.0	6.0	7.3	8.5	10.4	12.0	14.7	17.0	19.0	21	70°	75°	78°	80°
3/4FH70	3/4H70	3/4	.469	3.8	4.9	5.9	7.0	8.6	9.9	12.1	14.0	17.1	19.8	22	25	70°	74°	76°	76°
3/4FH80	3/4H80	3/4	.484	4.4	5.7	6.7	8.0	9.8	11.3	13.9	16.0	19.6	23	25	28	70°	73°	75°	76°
3/4FH90	3/4H90	3/4	.500	4.9	6.4	7.5	9.0	11.0	12.7	15.6	18.0	22	25	28	32	70°	70°	71°	73°
3/4FH100	3/4H100	3/4	.507	5.5	7.1	8.4	10.0	12.2	14.1	17.3	20	24	28	32	35	70°	73°	76°	78°
3/4FH110	3/4H110	3/4	.575	6.0	7.8	9.2	11.0	13.5	15.6	19.1	22	27	31	35	39	70°	72°	75°	72°
3/4FH120	3/4H120	3/4	.568	6.6	8.5	10.0	12.0	14.7	17.0	21	24	29	34	38	42	70°	70°	71°	71°

*All References to G.P.M. mean U.S. G.P.M.