

HW series wide angle hollow cone spray nozzles

SPRAY CHARACTERISTICS:

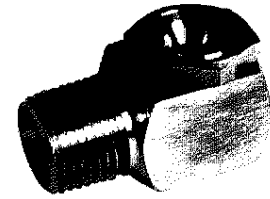
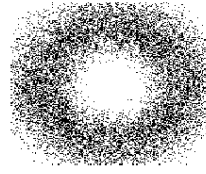
A hollow cone spray pattern, similar to the BEX H series, but with wider spray angles. The included angle of the spray cone is 120° at 10 p.s.i.

CONSTRUCTION: The models listed are machined from bar stock, and are two piece construction. Standard materials are brass, 303 stainless steel, and 316 stainless steel. Some models are also available in other materials.

TYPICAL APPLICATIONS:

- Water Cooling
- Roof Cooling
- Air Cooling
- Air Washing

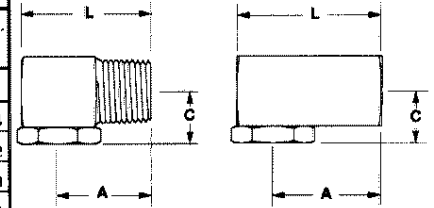
Pattern - Hollow Conical



DIMENSIONS

Male Connection Female Connection

DIMENSIONS (inches)							
male model	Dim. A	Dim. C	Dim. L	female model	Dim. A	Dim. C	Dim. L
1/8HW	11/16	3/8	1	1/8FHW	11/16	3/8	1
1/4HW	15/16	1/2	1 1/4	1/4FHW	15/16	1/2	1 1/4
3/8HW	1	9/16	1 3/8	3/8FHW	1 1/8	5/8	1 1/2
1/2HW	1 3/8	3/4	1 7/8	1/2FHW	1 3/8	3/4	1 7/8
3/4HW	1 9/16	7/8	2 1/4	3/4FHW	1 5/8	7/8	2 1/4



MODEL NUMBER		PIPE SIZE N.P.T.	MAXIMUM FREE PASSAGE (inches)	CAPACITY (G.P.M.)* AT VARIOUS PRESSURES (p.s.i.)												SPRAY ANGLE @			
FEMALE	MALE			5 p.s.i.	7 p.s.i.	10 p.s.i.	15 p.s.i.	20 p.s.i.	30 p.s.i.	40 p.s.i.	60 p.s.i.	80 p.s.i.	100 p.s.i.	125 p.s.i.	10 p.s.i.	20 p.s.i.	40 p.s.i.	80 p.s.i.	
1/8FH1W	1/8H1W	1/8	.055	--	--	.10	.12	.14	.17	.20	.24	.28	.32	.35	--	115°	107°	95°	
1/8FH2W	1/8H2W	1/8	.077	--	.17	.20	.24	.28	.35	.40	.49	.57	.63	.71	120°	117°	105°	97°	
1/8FH3W	1/8H3W	1/8	.093	--	.25	.30	.37	.42	.52	.60	.73	.85	.95	1.06	120°	116°	109°	92°	
1/8FH5W	1/8H5W	1/8	.109	--	.42	.50	.61	.71	.87	1.00	1.22	1.41	1.58	1.77	120°	116°	107°	90°	
1/4FH1W	1/4H1W	1/4	.055	--	.08	.10	.12	.14	.17	.20	.24	.28	.32	.35	120°	110°	102°	90°	
1/4FH2W	1/4H2W	1/4	.077	--	.17	.20	.24	.28	.35	.40	.49	.57	.63	.71	120°	110°	105°	92°	
1/4FH3W	1/4H3W	1/4	.093	--	.25	.30	.37	.42	.52	.60	.73	.85	.95	1.06	120°	114°	104°	90°	
1/4FH5W	1/4H5W	1/4	.109	--	.42	.50	.61	.71	.87	1.00	1.22	1.41	1.58	1.77	120°	113°	107°	98°	
1/4FH7.5W	1/4H7.5W	1/4	.158	.53	.63	.75	.92	1.06	1.30	1.50	1.84	2.1	2.4	2.7	120°	115°	110°	92°	
1/4FH10W	1/4H10W	1/4	.170	.71	.84	1.00	1.22	1.41	1.73	2.0	2.4	2.8	3.2	3.5	120°	115°	110°	93°	
1/4FH12.5W	1/4H12.5W	1/4	.188	.88	1.05	1.25	1.53	1.77	2.2	2.5	3.1	3.5	4.0	4.4	120°	118°	110°	94°	
1/4FH15W	1/4H15W	1/4	.201	1.06	1.25	1.50	1.84	2.1	2.6	3.0	3.7	4.2	4.7	5.3	120°	115°	108°	92°	
3/8FH5W	3/8H5W	3/8	.109	.35	.42	.50	.61	.71	.87	1.00	1.22	1.41	1.58	1.77	120°	117°	107°	99°	
3/8FH7.5W	3/8H7.5W	3/8	.158	.53	.63	.75	.92	1.06	1.30	1.50	1.84	2.1	2.4	2.7	120°	113°	110°	93°	
3/8FH10W	3/8H10W	3/8	.170	.71	.84	1.00	1.22	1.41	1.73	2.0	2.4	2.8	3.2	3.5	120°	115°	110°	93°	
3/8FH12.5W	3/8H12.5W	3/8	.188	.88	1.05	1.25	1.53	1.77	2.2	2.5	3.1	3.5	4.0	4.4	120°	115°	108°	91°	
3/8FH15W	3/8H15W	3/8	.201	1.06	1.25	1.50	1.84	2.1	2.6	3.0	3.7	4.2	4.7	5.3	120°	110°	105°	90°	
3/8FH20W	3/8H20W	3/8	.234	1.41	1.67	2.0	2.4	2.8	3.5	4.0	4.9	5.7	6.3	7.1	120°	118°	116°	110°	
3/8FH25W	3/8H25W	3/8	.265	1.77	2.1	2.5	3.1	3.5	4.3	5.0	6.1	7.1	7.9	8.8	120°	117°	115°	110°	
3/8FH30W	3/8H30W	3/8	.280	2.1	2.5	3.0	3.7	4.2	5.2	6.0	7.3	8.5	9.5	10.6	120°	115°	110°	102°	
1/2FH50W	1/2H50W	1/2	.358	3.5	4.2	5.0	6.1	7.1	8.7	10.0	12.2	14.1	15.8	17.7	120°	115°	108°	103°	
3/4FH80W	3/4H80W	3/4	.468	5.7	6.7	8.0	9.8	11.3	13.9	16.0	19.6	23	25	28	120°	117°	110°	103°	

*All References to G.P.M. mean U.S. G.P.M.

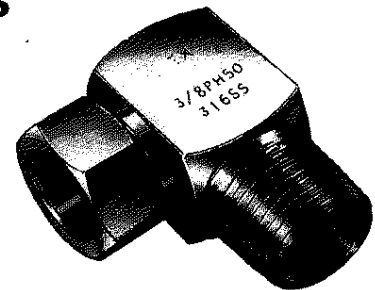
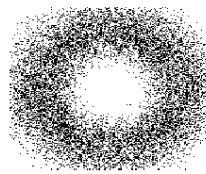
PH series hollow cone phosphating nozzles

SPRAY CHARACTERISTICS:

A Hollow cone spray pattern for phosphating applications. This large droplet, low impingement type of spray results in a tighter and more consistent phosphate crystalline structure.

CONSTRUCTION: Two piece construction. Available in 303 stainless steel, and 316 stainless steel.

Pattern - Hollow Conical



MODEL NUMBER	PIPE SIZE N.P.T. MALE	ORIFICE DIAMETER (inches)		CAPACITY (G.P.M.)* AT VARIOUS PRESSURES (p.s.i.)												SPRAY ANGLE @		
		BODY	CAP	5 p.s.i.	7 p.s.i.	10 p.s.i.	15 p.s.i.	20 p.s.i.	30 p.s.i.	40 p.s.i.	60 p.s.i.	80 p.s.i.	100 p.s.i.	10 p.s.i.	15 p.s.i.	30 p.s.i.		
3/8PH23	3/8	.220	.312	1.63	1.92	2.3	2.8	3.3	4.0	4.6	5.6	6.5	7.3	45°	53°	60°		
3/8PH28	3/8	.231	.312	2.0	2.3	2.8	3.4	4.0	4.8	5.6	6.9	7.9	8.9	40°	43°	48°		
3/8PH51	3/8	.344	.375	3.5	4.2	5.0	6.1	7.1	8.7	10.0	12.2	14.1	15.8	40°	50°	50°		
3/8PH53	3/8	.375	.375	3.5	4.2	5.0	6.1	7.1	8.7	10.0	12.2	14.1	15.8	70°	70°	70°		

*All References to G.P.M. mean U.S. G.P.M.